

SOCKETED BOLLARDS

INSTALLATION/OPERATION INSTRUCTIONS

IMPORTANT NOTE: Ensure all relevant personnel read the points listed below and that a copy is passed on to staff involved with the installation.

SAFETY NOTE: Please refer to the 'Manual Handling Operations Regulations 1992' during the handling of the product and materials used for the installation.

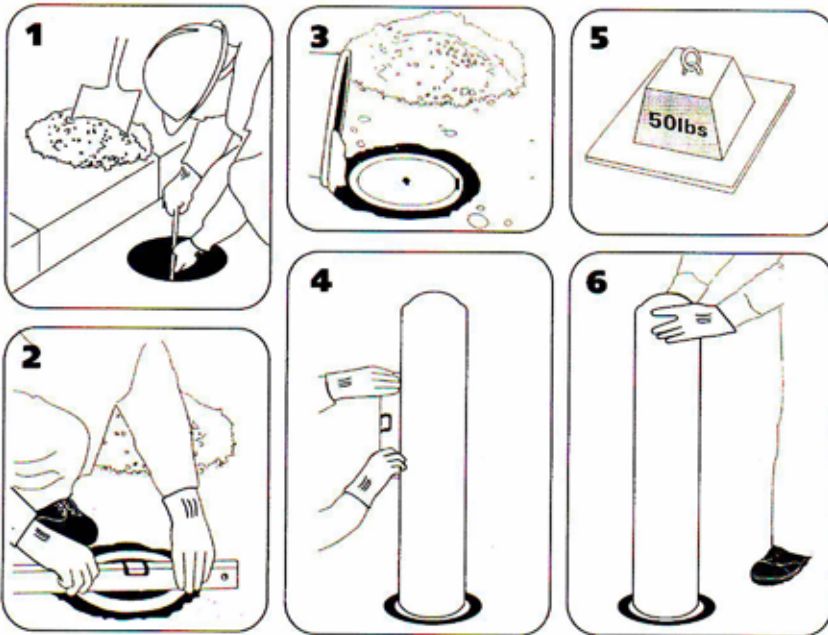
PRODUCT COMPONENTS:

- ITEM 1. Bollard and Socket x 1
- ITEM 2. Bollard Key x 1
- ITEM 3. Key Hole Plug x 1

TOOLS REQUIRED FOR INSTALLATION:

- Equipment to Excavate Hole
- Concrete Mix (Fast Setting)
- Spirit Level
- Weight

INSTALLATION INSTRUCTIONS



CHECK FOR BURIED SERVICES BEFORE INSTALLATION

DURING INSTALLATION ENSURE AREA IS CORRECTLY CORDONED OFF PREVENTING PEDESTRIAN/VEHICLE ACCESS.

REFERENCE: NEW ROADS AND STREETWORKS ACT 1991 CHAPTER 8 TSRGD.

1. Mark up and dig hole approximately 400mm diameter x 600mm deep and bed with gravel or sand.
2. Bed the socket on the gravel and use a spirit level to ensure the socket is flush to the final wearing course/block paving.

IMPORTANT: For safety site the bollard key hole on opposite side to traffic. If the bollard is carrying a sign or personalisation position the bollard so the graphics face the correct direction.

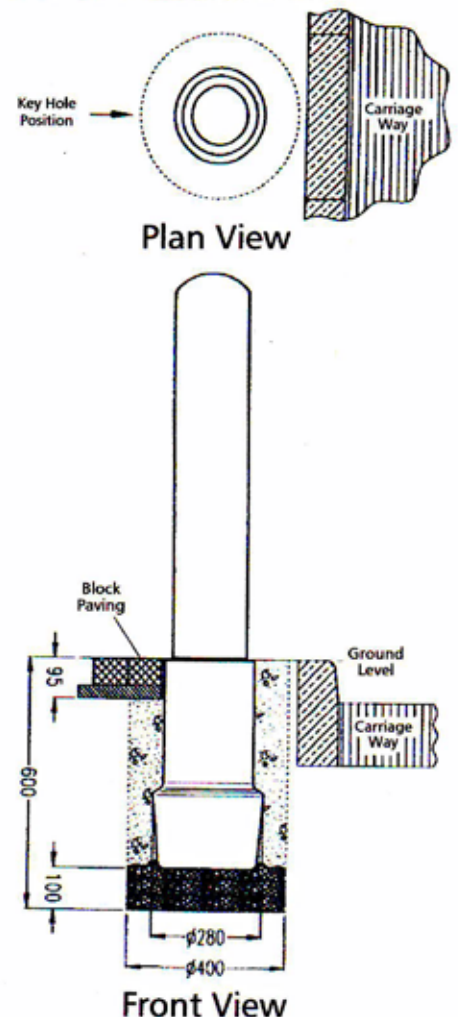
Ensure Retroreflective banding is in the correct orientation – red towards oncoming traffic (amber on central reservation).

3. Place a cover over the socket to ensure no concrete falls inside and pour concrete around the socket base (200-300mm).
4. Remove cover and place bollard into the socket and check vertical alignment using a spirit level.

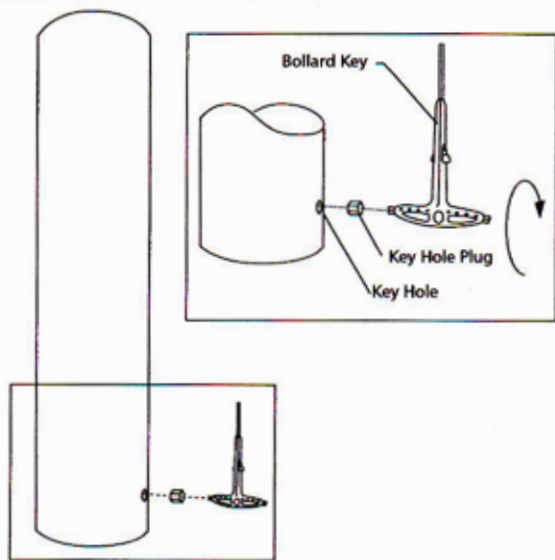
DO NOT LEAVE THE BOLLARD IN THE SOCKET WHILST THE CONCRETE IS WET AS THIS MAY LEAD TO MISALIGNMENT.

5. Remove bollard using the key supplied and fill the hole to ground level. Place cover and weight on top of the socket whilst the concrete cures.
6. Place bollard in socket once concrete has cured. Ensure the bollard locks in position preventing unauthorised removal.

MODEL SPECIFICATION



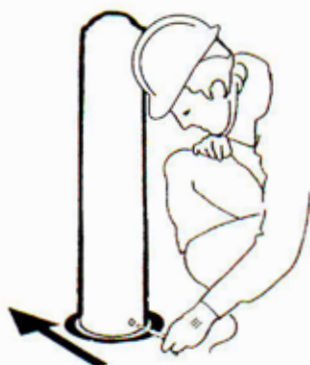
- Recommended hole size dia. 400mm x 600mm deep.
- For safety site the bollard key hole on opposite side to traffic. If the bollard is carrying a sign or personalisation, position the bollard so the graphics face the correct direction.
- Ensure Retroreflective banding is in the correct orientation - red towards oncoming traffic (amber on central reservation).
- We recommend socket is bedded on gravel for drainage.
- Cover socket to avoid build up of concrete/gravel in the socket, which will prevent the bollard seating and locking
- Avoid contact with hot tarmac as this will seriously impair the performance of the bollard.
- We recommend installing with quick setting concrete (eg. grade C10P) but exact installation requirements should be assessed from a site survey.
- Individual Model Specification Drawings are available for every Glasdon UK Bollard, please contact our sales office on 01253 600410 for an electronic or hard copy.



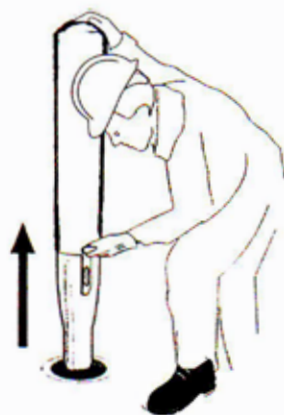
SECURITY KEY HOLE PLUG

- Once your bollard has been successfully installed you can prevent unauthorised removal of the bollard with the use of the Key Hole Plug supplied as standard with the bollard.
- Take the Key Hole Plug and insert into the Key Hole of the bollard ensuring the hexagonal end points outwards.
- Insert the hexagonal end of the Bollard Key into the hexagonal hole of the Key Hole Plug.
- Turn the Bollard Key clockwise until the Key Hole Plug is fully inserted.
- To remove the Key Hole Plug from the bollard simply insert the hexagonal end of the Bollard Key into the Key Hole Plug and turn anti-clockwise until fully unscrewed.
- The bollard Lock is now accessible with the use of the special Bollard Key

BOLLARD REMOVAL



1. Insert key into the key hole.



2. With key fully engaged^{*}, lift to remove bollard.

TO REPLACE BOLLARD



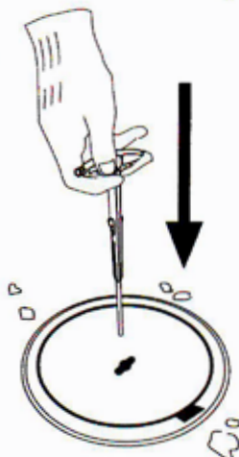
3. Insert bollard stem into sprocket and twist until bollard drops to engage.

*(Warning - a partially inserted key may bend)

BLANKING CAP REMOVAL USING BOLLARD CAP

A cap is available for blanking off the socket, when bollard is not in use, to permit safe access.

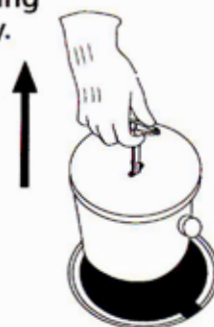
1. Insert key.



2. Twist key 90 deg.



3. Lift blanking cap with key.



- A planned maintenance schedule of regular inspection is recommended, replacing components as necessary.
- Replacement components are available direct from GLASDON.
- GLASDON cannot be held responsible for claims arising from incorrect installation, unauthorised modifications or misuse of the product.

Issue 5 September 2005 Stock no. C000/0059
©Copyright September 2005

Glasdon reserve the right to alter specification without prior notice.

 Glasdon[®] IS A REGISTERED TRADEMARK OF GLASDON GROUP OR ITS SUBSIDIARIES IN THE U.K. AND OTHER COUNTRIES



Glasdon U.K. Limited

® Preston New Road
BLACKPOOL
Lancashire
FY4 4UL

Tel: 01253 600410
Fax: 01253 792558

e-mail: sales@glasdon-uk.co